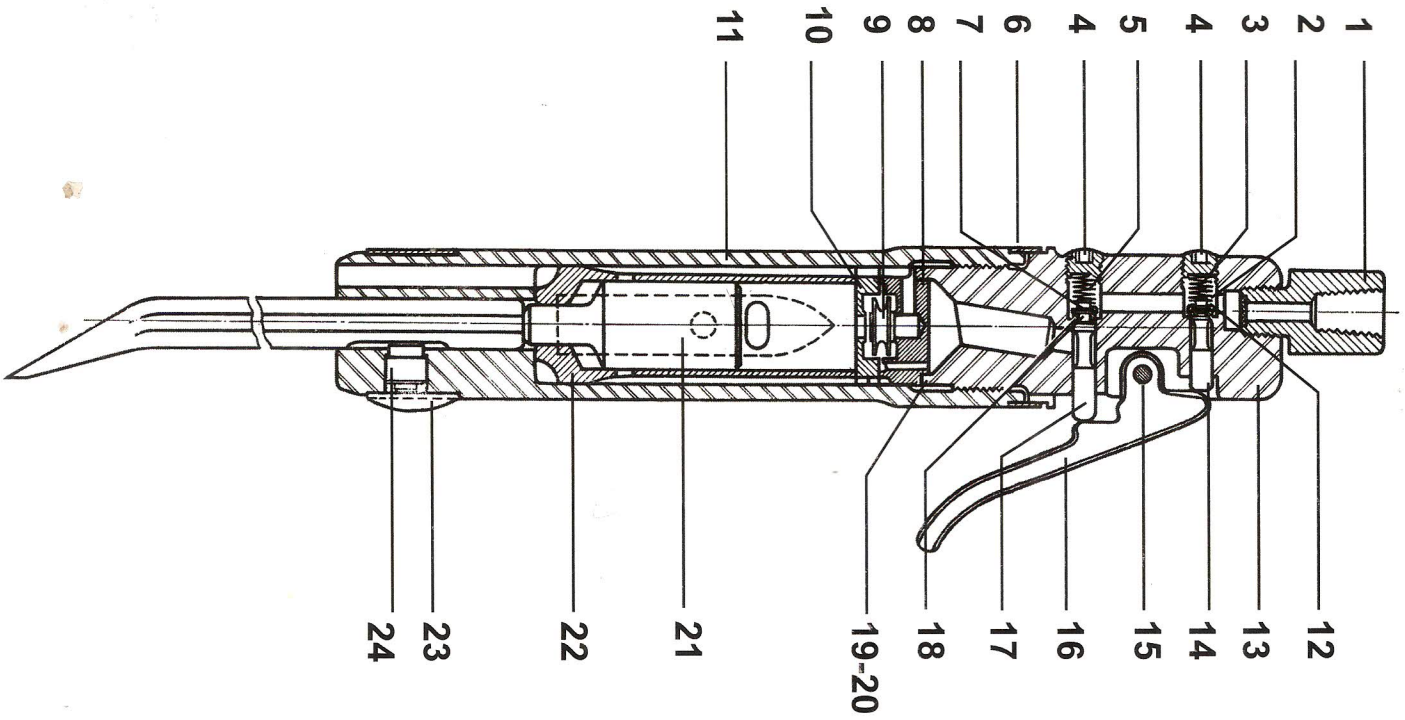


RB 545R & 545RNS WELD FLUX CHIPPER AND NEEDLE SCALER

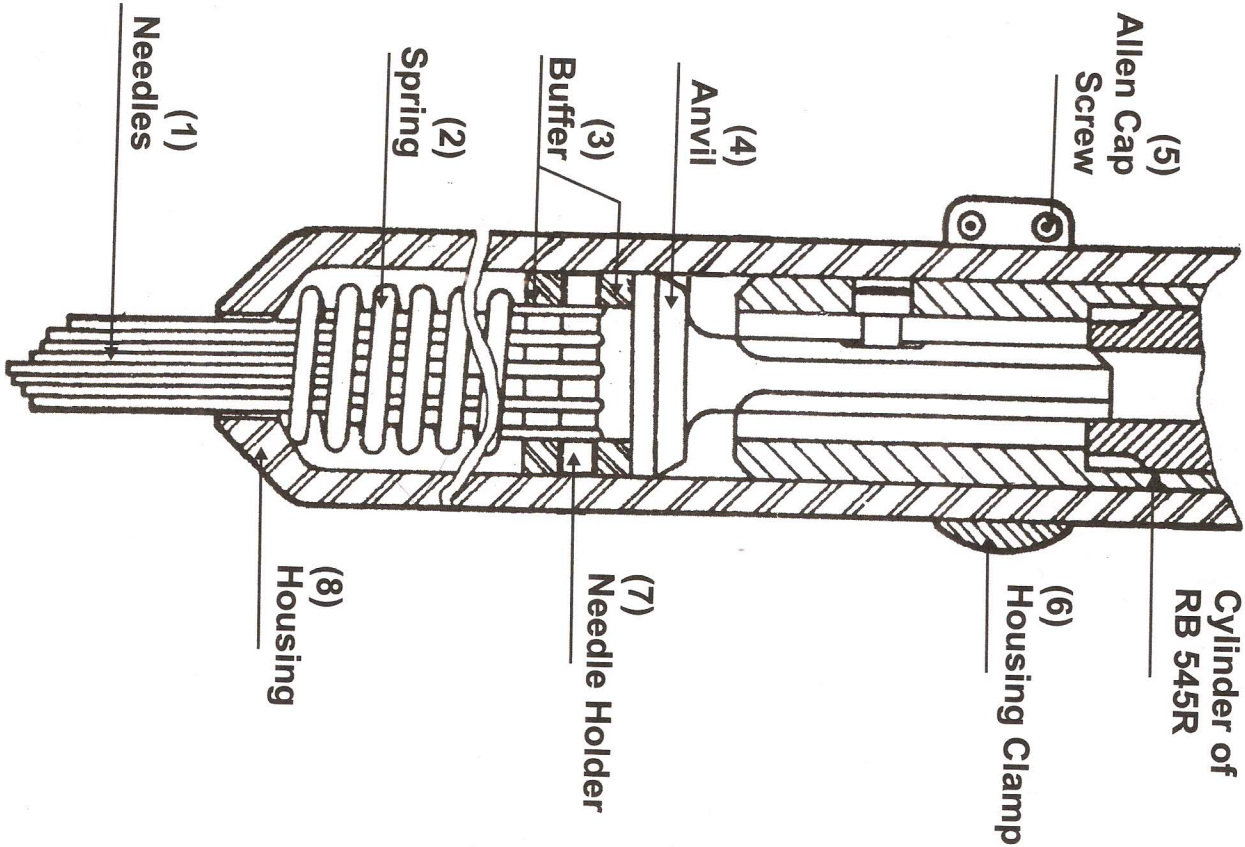


RB 545R & 545RNS WELD FLUX CHIPPER AND NEEDLE SCALER

Illust. No.	Stock No.	Description	Qty.
1	H 17 31 830	Air Inlet Busing	1
2	* R 56 06 705	Retainer	1
3	* R 34 20 705	Spring	1
4	* H 16 26 009	Throttle Valve plug	2
5	* R 34 20 705	Spring	1
6	* I 38 14 830	Lock Ring	1
7	* R 56 06 705	Retainer	1
8	E 50 07 830	Valve Case	1
9	E 05 07 830	Pulley Value	1
10	E 50 09 830	Lower Value Case	1
11	E 85 11 830	Cylinder	1
12	* R 01 17 705	'O' Ring packing	1
13	E 85 62 830	Cylinder Head	1
14	E 12 25 830	Blower Value	1
15	* E 11 59 830	Throttle Lever Pin	1
16	F 28 40 830	Throttle Lever	1
17	E 12 26 830	Throttle Valve	1
18	* R 01 17 705	'O' Ring packing	1
19	* R 54 39 705	Shim (.005")	3
20	* R 54 40 705	Shim (.010")	3
21	E 15 22 830	Piston	1
22	E 73 62 830	Cylinder Sleeve	1
23	I 38 15 830	Retaining Clip	1
24	E 31 50 830	Release Pin	1
-	A 94 37 830	Cylinder Complete Consist of illust. No. 11 & 22	1
-	A 94 38 830	Cylinder Head Complete	1
-	A 94 39 830	Blower Valve Complete Consist of illust. No. 2,3,12 & 14	1
-	A 94 40 830	Throttle Valve Complete Consist of illust. No. 5,7,17 & 18	1

Note :
Parts indicated by (*) are fast wearing parts and are recommended for stocking.
PLEASE ORDER SPARE PARTS ON STOCK NOS.

NEEDLES SCALER PARTS
& INSTALLATION PROCEDURE



RB 545R & 545RNS
WELD FLUX CHIPPER AND NEEDLE SCALER

NEEDLE SCALER ATTACHMENT ASSEMBLY
& INSTALLATION PROCEDURE

Illust. No.	Stock No.	Description	Qty.
1	1 39 03 831	Needle	1
2	1 34 81 831	Spring Compression	1
3	1 22 25 831	Buffer-Holder	1
4	E 15 54 831	Anvil	2
5	R 28 18 005	Screw-Allen Cap	1
6	E 41 24 831	Clamp-Housing	1
7	E 44 73 831	Needle-Holder	1
8	E 85 63 831	Housing (Round Nose)	1
9	A 92 55 826	Needle Scaler Attachment Assembly Consist of illust. No. 1 to 8	1

INSTALLATION PROCEDURE FOR NEEDLE SCALER

1. Drop spring in housing.
2. Place one rubber holder buffer on top of spring.
3. Put needles in holes in needle holder.
4. Place assembled needle holder and needles in housing Guide needles through buffer and spring and out of opening in nose of housing.
5. Place second rubber holder buffer on top of needle holder.
6. Remove retaining clip, I-3815830 from RB-545R Weld Flux Chipper
7. Be sure anvil is locked in cylinder.
8. Slide cylinder into housing at least 2" beyond cylinder end and tighten clamping screws in clamp to hold housing to cylinder.